



# QUICK CART



EXECUTIVE  
SERIES™

SMART DESIGN. TRUSTED EXPERIENCE.

## WHEN IMAGE IS EVERYTHING, CART-LESS IS KEY

Around the clock, 365 days a year, your staff works diligently to maintain a neat, clean appearance throughout your facility. This ensures your guests and visitors experience the comfort and cleanliness they expect 24/7.

Rubbermaid Commercial Products is proud to introduce Quick Cart, the industry's most durable mobile cart solution that empowers staff to maintain areas discreetly and efficiently.

Quick Cart is designed to:

- *Provide a premium guest experience, keeping the cleaning process hidden from view of guests*
- *Easily move throughout the property with a lightweight, compact, and durable construction*
- *Deliver a flexible solution, customizable for the unique needs of your property*



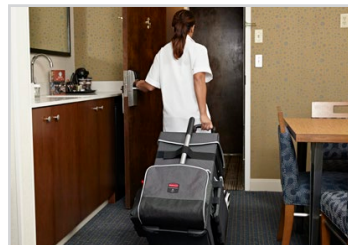
## CART-LESS SOLUTION BENEFIT

Ergonomic design and innovative features provide superior cleaning solutions.



### Discreet Appearance

Compact design remains inconspicuous by blending into public areas and disappearing into guest rooms.



### Compact and Ergonomic Design

Lightweight and more compact than traditional carts for easier maneuverability in tight spaces.



### Versatility

Versatile compartments allow for multiple configurations and uses, including housekeeping, maintenance, and more.



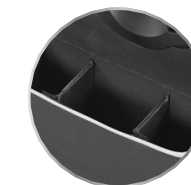
Rubbermaid Quick Cart is the industry's most durable mobile cart solution for housekeeping, janitorial and maintenance environments. Constructed with high-performance materials for added strength and durability, this compact cart withstands rigorous daily use. Treated with Dupont™ Teflon® fabric protector, Rubbermaid Quick Cart repels water, oil and stains, to greatly extend the life of the cart. Additional features that make Quick Cart the best in durability include:

- **ALUMINUM TELESCOPING HANDLE** is dependable for heavy daily use
- **ROBUST BALL-BEARING WHEELS** are designed for reduced noise and heavy-duty use
- **INNER LINER** is treated with Teflon® fabric protector and is removable for easy cleaning or replacement



### Repels Water, Oil, and Stains

Teflon® fabric protector helps maintain Quick Cart aesthetics and protects from rigorous daily use.



### ADJUSTABLE DIVIDERS

Dividers can be moved or removed to create multiple compartments to meet your specific cleaning needs.



### REMOVABLE CARRY CADDY

Rigid dividers improve efficiency, keeping amenities and supplies organized.



### SECURED STICK GOODS

Heavy-duty fastening strap wraps around supplies to keep them secure while the cart is in motion.



### SECURE SUPPLIES

Durable lid conceals supplies and features hardware for adding a lock to prevent unauthorized access to cart and its contents.



### Heavy-Duty Kick Plate

Reinforced rubberized kick plate for increased durability and reduced wear and tear.



1902465 Executive Quick Cart – Large

## CUSTOMIZABLE FOR THE UNIQUE NEEDS OF YOUR PROPERTY



When converting to a cart-less cleaning solution, staff will experience a new and innovative approach to cleaning. With a professional and discreet appearance, Rubbermaid Quick Cart blends seamlessly into the environment to provide a premium guest experience. To make the transition to cart-less cleaning smooth for your property, consider the following helpful tips.



### HOUSEKEEPING

#### Great For:

- Traditional Housekeeping
- Turn-Down Service
- Towel Refresh
- Food & Beverage Restocking



### JANITORIAL

#### Great For:

- Public Spaces
- Lobby Cleaning
- Fitness Center
- Poolside



### MAINTENANCE

#### Great For:

- Back-of-House Services
- Guest Room Maintenance

## SUGGESTIONS FOR IMPLEMENTING RUBBERMAID QUICK CART



### 1. Create a Standard Process for Your Property

- Define the pack-out process for each use throughout the property (Housekeeping, Turn-Down Service, Public Spaces).
- Designate areas for stocking Quick Carts and for storing replenishment supplies.



### 3. Define Roles and Responsibilities

- Define staff responsibility for stocking carts, restocking supplies in pack-out area, linens removal, and glassware replacement.



### 2. Pair with Complementary Products

- Pair with Rubbermaid Executive Series X-Cart to manage soiled linens and utilize closets on each floor for stocking clean linens.



### 4. Engage Staff

- Train the staff on the new standard process.
- Engage in discussion and answer questions.
- Ask for staff feedback to optimize the new cleaning process to best meet the needs of your property.

## QUICK CART SOLUTION SETS

### HOUSEKEEPING

Discreet, lightweight and compact design stays hidden from guests' view.



## LINEN & WASTE MANAGEMENT

### 1881781 COLLAPSIBLE MULTI-STREAM X-CART (2X4-BUSHEL) WITH 1889864 COVER

Multi-stream option provides the ability to easily divide and sort materials, perfect for collecting and transporting linens and waste.



## CARPET CARE

### 1868440 EXECUTIVE 12" MANUAL-HEIGHT UPRIGHT VACUUM CLEANER

Durable vacuum provides superior filtration and allows for easy height adjustment with four height options and onboard tools.



## HARD FLOOR CARE & SAFETY

- 1867396 11" Microfiber Flexible Flat Mop Frame, Single-Sided
- 1863883 20" to 40" Telescoping Handle
- FGQ89100BL00 Microfiber Damp Mop Cover
- FGQ86100WH00 Microfiber Hi-Pile Cover
- FGQ87100BL00 Glass Mop Cover



## SURFACE CLEANING

- 1863890 12" Brown Multipurpose Microfiber Cloth
- FGQ85200WH00 22" Multipurpose Flexible Microfiber Duster and Frame



### JANITORIAL

Compact and discreet appearance allows staff to blend into public areas.



### 1881750 COLLAPSIBLE X-CART, (8-BUSHEL) WITH 1889864 COVER

Industry-leading capacity of up to 220 lbs., the versatile Collapsible X-Cart system delivers reliable, long-lasting performance.



### FG421588BLA EXECUTIVE DUAL-ACTION BRUSHLESS MECHANICAL SWEEPER

Two rubber agitator rolls and superior low-profile design provide maximum cleaning power to collect dust, dirt, and debris.



- 1867508 Executive Multi-Lingual Wooden Caution Sign, 2-Sided, Stainless
- 1863896 Executive WaveBrake™ Side-Press Mop Combo, Black



- 1863888 12" Gray Multipurpose Microfiber Cloth
- FGQ85200WH00 22" Multipurpose Flexible Microfiber Duster and Frame
- 1867396 11" Microfiber Flexible Flat Mop Frame, Single-Sided and FGQ889100BL00 Microfiber Flexi-Frame Damp Mop Cover
- 1863883 20" to 40" Telescoping Handle



### MAINTENANCE

Versatile design allows staff to efficiently service guest rooms and public areas.



### 1867539 EXECUTIVE TILT TRUCK 3/4 CUBIC YARD, SF, W/QUIET CASTERS

Durable molded trucks with quiet casters move quickly and quietly throughout a property, while handling heavy loads with ease.



### 1868433 EXECUTIVE 6-QT. CAPACITY BACKPACK VACUUM CLEANER

Innovative frame design keeps motor and its heat away from the body while promoting airflow and comfortable use.



- 1867505 Executive Multilingual Caution Sign, 2-Sided, Black
- 1861211 Executive 24" Multisurface – Medium Sweep Push Broom



- 1863889 16" Gray Multipurpose Microfiber Cloth
- 1863891 16" Brown Multipurpose Microfiber Cloth
- FG9C03060000 32 oz.-Spray Bottle and Trigger





1902467



1902466



1902465

## QUICK CART SPECIFICATION GUIDE

Description	Executive Quick Cart – Large	Executive Quick Cart – Medium	Executive Quick Cart – Small
Quick Cart Product Number	1902465	1902466	1902467
Quick Cart Weight	18.00 lbs.	14.25 lbs.	12.25 lbs.
Quick Cart Outer Dimensions	16.50" L x 14.25" W x 25.00" H	16.50" L x 14.25" W x 21.00" H	16.50" L x 14.25" W x 17.00" H
Quick Cart Inner Dimensions	16.00" L x 12.50" W x 22.50" H	16.00" L x 12.50" W x 18.50" H	16.00" L x 12.50" W x 14.50" H
Maximum Weight Capacity (lbs)	60.00 lbs.	40.00 lbs.	30.00 lbs.
Internal Storage Capacity	2.60 ft <sup>3</sup>	2.14 ft <sup>3</sup>	1.68 ft <sup>3</sup>
Quick Cart Caddy Product Number	1902468	1902468	1902459
Quick Cart Caddy Dimensions	14.00" L x 11.00" W x 5.50" H	14.00" L x 11.00" W x 5.50" H	10.50" L x 11.00" W x 5.50" H
Quick Cart Caddy Capacity	15.00 lbs.	15.00 lbs.	10.00 lbs.

## CADDIES AND LINERS

### CADDIES



### REPLACEMENT LINERS



### PLASTIC POCKET LINERS



No.	Color	Description
1902468*	Dark Gray	Executive Quick Cart Caddy, Large
1902459**	Dark Gray	Executive Quick Cart Caddy, Small
1919270***	Clear	Executive Quick Cart Plastic Pocket Liner
1902701	Black	Executive Quick Cart Replacement Liner, Large
1902702	Black	Executive Quick Cart Replacement Liner, Medium
1902703	Black	Executive Quick Cart Replacement Liner, Small

\* Replacement for Medium and Large Executive Quick Carts.

\*\* Replacement for Small Executive Quick Carts.

\*\*\*Replacement for all Executive Quick Carts.